

Further to the President's announcement on Wednesday and the government gazette released today, South Africa will move to **Alert Level 1 from 00h01 on Monday, 21 September 2020**, with changes re International travel coming into effect on 01 October 2020 (gazette still to be published by Minister of Tourism).

A copy of the relevant government gazette can be found on the SACSC website, under the Covid-19 table, section 5 ie Government Gazette – 17 September 2020 – Level 1 regulations.

## ALL SHOPPING CENTRES AND RETAIL STORES ARE REMINDED OF FOLLOWING:



### WEARING MASKS IN PUBLIC PLACES IS MANDATORY

Employees, business owners and managers are legally obliged to ensure compliance.  
**NO MASK, NO ENTRY.**



### CURFEW TIMES CHANGED TO BETWEEN MIDNIGHT AND 4AM

This excludes those with permits or required to go out for emergency or for urgent medical assistance.



### COMPLIANCE OFFICER NAME TO BE DISPLAYED

Retail Stores and Shopping Centres are required to display name of Compliance Officer in a prominent place in order for public to see.



### HEALTH & SAFETY AND HYGIENE

Measures as previously defined to be continued with, including staff screening on daily basis.

Sanitiser at each entrance.

Wash and/or sanitise your hands regularly.



### GATHERINGS

Must wear a face mask. Maintain distance of at least 1.5m between people.

Owner or operator of any indoor/outdoor facility required to display certificate of occupancy – this will include maximum number of people facility may hold.

Limited to 50% capacity with maximum of 250 at an indoor venue and maximum of 500 at an outdoor venue.



### NUMBER OF PEOPLE IN RETAIL STORES

Number of people in stores continues to be limited as previously defined.



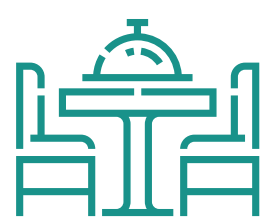
### DOWNLOAD COVID ALERT SOUTH AFRICA APP

Get notified if you are exposed to coronavirus.

All employees, staff, consumers etc encouraged to participate.

The more who download the App the more effective it becomes.

## INDICATED BELOW IS A SUMMARY OF THE CHANGES RELEVANT TO THE SHOPPING CENTRE INDUSTRY:



### RESTAURANTS

Number of guests at any time remains limited as per social distancing of 1.5m requirements.

Alcohol may be served in all licensed restaurants (all days of week).

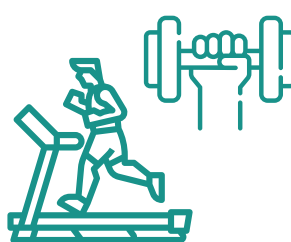
Curfew of 00h00.



### ALCOHOL

Sale of alcohol for off-consumption purposes amended i.e. now permitted Monday to Friday, 09h00 – 17h00.

Off-site consumption sales closed Friday to Sunday and public holidays.



### GYMS AND FITNESS CENTRES

Amended to allow 50% capacity of venue rather than previous number of 50 limitation.



### BARS, TAVERNS AND SHEBEENS

Not more than 50% capacity of venue.

Distance of 1.5m between people.

Curfew of 00h00.

Night Clubs to remain closed.



### ENTERTAINMENT (INCLUDING CINEMAS, THEATRES, CONCERTS & LIVE PERFORMANCES)

Amended to 50% capacity of venue with maximum of 250 at an indoor venue and maximum of 500 at an outdoor venue, rather than previous number of 50 limitation.

Further advice and recommendations to follow.

**#SlowTheCurve**

Government WhatsApp Support Number  
**0600 123 456**

Emergency Number  
**0800 029 999**